



RELEASE NOTE

Version 5.1 - NorConnect

Software version 5.1.250506 brings automated project conversions from Nor140 format, as well as several fixes and improvements.

News and added features

Individual primary rating for projects

The user may now quickly change the displayed primary rating for individual projects. Clicking the rating cell for a project opens a dropdown menu with all available ratings defined by the applicable standard.

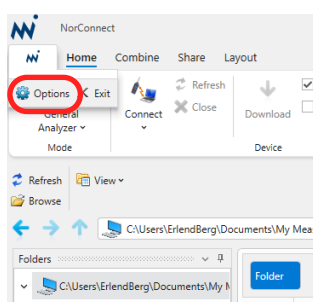
	Name	Primary Rating	Folder	
▼	R'w 44 dB (4 items) ▶			
<input checked="" type="checkbox"/>	Project 1	Dw = 41 dB ^	R'w 44 dB	
	Project 2	Dw = 41 dB	R'w 44 dB	
	Project 3	R'w = 44 dB	R'w 44 dB	
		DnT,w = 42 dB	R'w 44 dB	

Automated conversion for Nor140 files

NorConnect now automatically interpret data on Nor140 SD-cards with conversion to NBF and further to Nor145/Nor150 format. This applies for Level and Building Acoustic measurements.

Handling of Microsoft 365 Sensitivity Labels

A new setting has been added to address issues related to Microsoft Sensitivity Labels. This feature must be enabled manually in the **Options** window. Once activated, users are required to manually save generated reports.



Bugfixes

- When converting a NL-43/53/63 measurement containing frequency data, NorConnect would issue the warning "*Frequency band weighting not supported: Z*" if the measurement had Z-weighted frequency data. The measurement however, was converted correctly.
- All places where time-data wait milliseconds are written, the correct millisecond separator is now being used. Mainly a problem with export to Excel.
- Issues regarding interference with the drag "icon" during drag and drop logic.
- Starting Nor850 version 4.1 from NorConnect 5.0 or older most likely ended up with an exception in the Nor850 software.
- NorConnect would fail when trying to convert an NL-xx "Auto" measurement which did not contain the "Auto_Leq" folder.
- The STIPA "ResultMarker" indicator was not displayed in downloaded measurements. Requires measurements taken with Nor145/150 version 6.0.1531 or newer to be fixed.

